

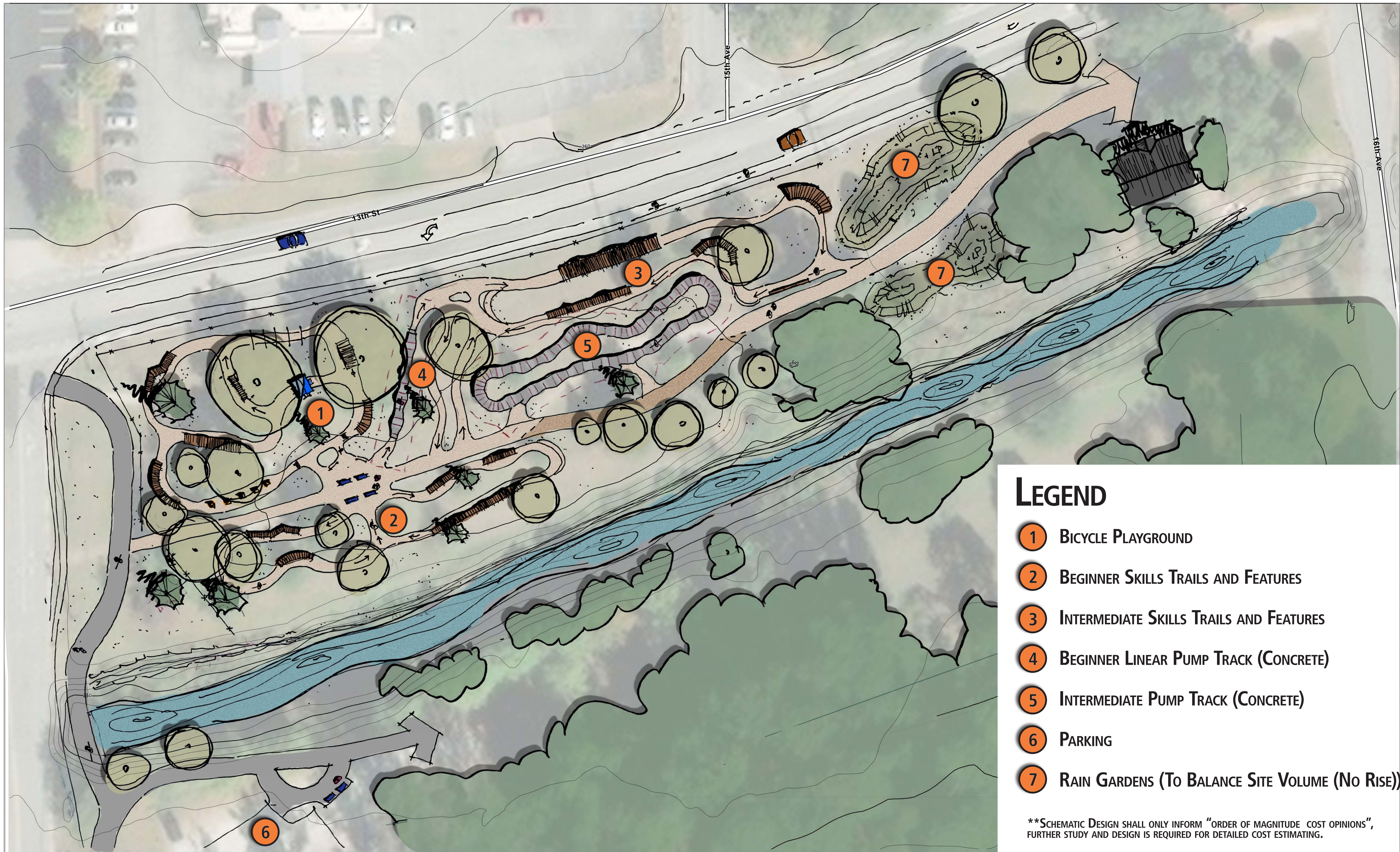
MIDTOWN CHILDREN'S BICYCLE PLAYGROUND AT DINGLEWOOD PARK

BICYCLE PLAYGROUND - SKILLS TRAILS - PUMP TRACK

SCHEMATIC DESIGN

COLUMBUS, GEORGIA

NOVEMBER 7, 2023



LEGEND

- 1 BICYCLE PLAYGROUND
- 2 BEGINNER SKILLS TRAILS AND FEATURES
- 3 INTERMEDIATE SKILLS TRAILS AND FEATURES
- 4 BEGINNER LINEAR PUMP TRACK (CONCRETE)
- 5 INTERMEDIATE PUMP TRACK (CONCRETE)
- 6 PARKING
- 7 RAIN GARDENS (TO BALANCE SITE VOLUME (NO RISE))

**SCHEMATIC DESIGN SHALL ONLY INFORM "ORDER OF MAGNITUDE COST OPINIONS", FURTHER STUDY AND DESIGN IS REQUIRED FOR DETAILED COST ESTIMATING.

DINGLEWOOD PARK

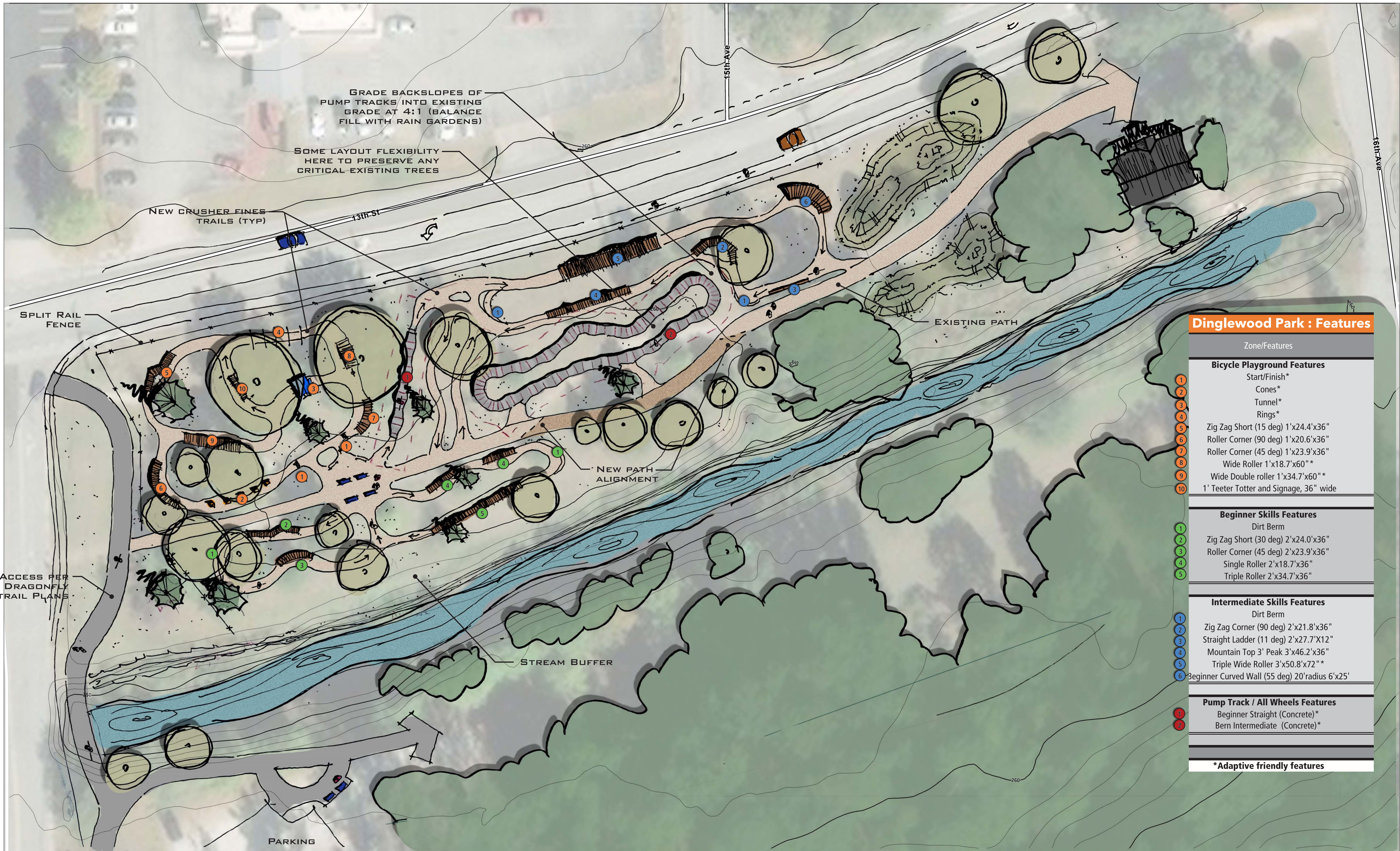
SCHEMATIC DESIGN
10.27.23

Legend
Contour_USGS
— 10 FT
— 2 FT

TRAIL SOLUTIONS
I M B A

0 20 40 80 Feet





GRADE BACKSLOPES OF PUMP TRACKS INTO EXISTING GRADE AT 4:1 (BALANCE FILL WITH RAIN GARDENS)

SOME LAYOUT FLEXIBILITY HERE TO PRESERVE ANY CRITICAL EXISTING TREES

NEW CRUSHER FINES TRAILS (TYP)

SPLIT RAIL FENCE

EXISTING PATH

NEW PATH ALIGNMENT

STREAM BUFFER

PARKING

Dinglewood Park : Features

Zone/Features	
Bicycle Playground Features	
1	Start/Finish*
2	Cones*
3	Tunnel*
4	Rings*
5	Zig Zag Short (15 deg) 1'x24.4'x36"
6	Roller Corner (90 deg) 1'x20.6'x36"
7	Roller Corner (45 deg) 1'x23.9'x36"
8	Wide Roller 1'x18.7'x60"*
9	Wide Double roller 1'x34.7'x60"*
10	1' Teeter Totter and Signage, 36" wide
Beginner Skills Features	
	Dirt Berm
1	Zig Zag Short (30 deg) 2'x24.0'x36"
2	Roller Corner (45 deg) 2'x23.9'x36"
3	Single Roller 2'x18.7'x36"
4	Triple Roller 2'x34.7'x36"
Intermediate Skills Features	
	Dirt Berm
1	Zig Zag Corner (90 deg) 2'x21.8'x36"
2	Straight Ladder (11 deg) 2'x27.7'x12"
3	Mountain Top 3' Peak 3'x46.2'x36"
4	Triple Wide Roller 3'x50.8'x72"*
5	Beginner Curved Wall (55 deg) 20'radius 6'x25'
Pump Track / All Wheels Features	
1	Beginner Straight (Concrete)*
2	Berm Intermediate (Concrete)*
*Adaptive friendly features	

DINGLEWOOD PARK

SCHEMATIC DESIGN

Legend
Contour_USGS
— 10 FT
— 2 FT

TRAIL SOLUTIONS
I M B A
0 20 40 80 Feet

BICYCLE PLAYGROUND SKILLS FEATURES

1



PRODUCT MADE BY AMERICAN RAMP COMPANY
CONTACT: ALEC BELDEN
EMAIL: ALEC@AMERICANRAMPCOMPANY.COM
WEB: AMERICANRAMPCOMPANY.COM
PRODUCT DESCRIPTION: START/FINISH

PART NUMBER: XXX-XXXX

2



PRODUCT MADE BY AMERICAN RAMP COMPANY
CONTACT: ALEC BELDEN
EMAIL: ALEC@AMERICANRAMPCOMPANY.COM
WEB: AMERICANRAMPCOMPANY.COM
PRODUCT DESCRIPTION: CONES

PART NUMBER: XXX-XXXX

NOTE: OR APPROVED EQUAL

3



PRODUCT MADE BY AMERICAN RAMP COMPANY
CONTACT: ALEC BELDEN
EMAIL: ALEC@AMERICANRAMPCOMPANY.COM
WEB: AMERICANRAMPCOMPANY.COM
PRODUCT DESCRIPTION: TUNNEL

PART NUMBER: XXX-XXXX

NOTE: OR APPROVED EQUAL

4



PRODUCT MADE BY AMERICAN RAMP COMPANY
CONTACT: ALEC BELDEN
EMAIL: ALEC@AMERICANRAMPCOMPANY.COM
WEB: AMERICANRAMPCOMPANY.COM
PRODUCT DESCRIPTION: RINGS

PART NUMBER: XXX-XXXX

NOTE: OR APPROVED EQUAL

5

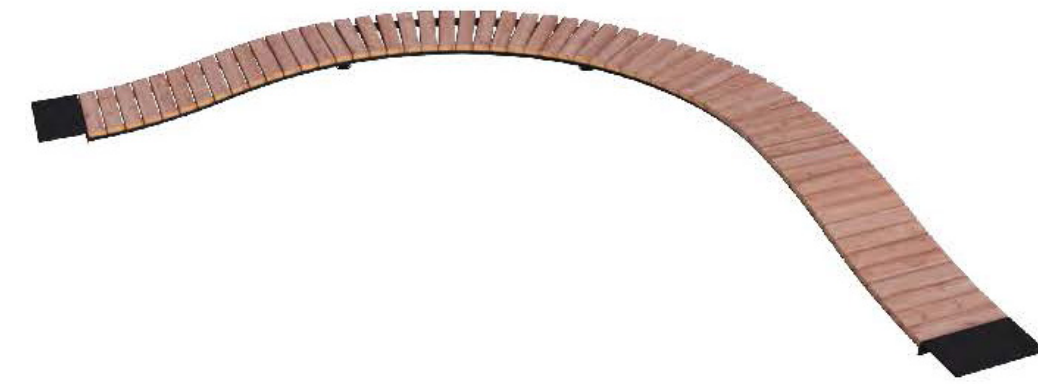


PRODUCT MADE BY AMERICAN RAMP COMPANY
CONTACT: ALEC BELDEN
EMAIL: ALEC@AMERICANRAMPCOMPANY.COM
WEB: AMERICANRAMPCOMPANY.COM
PRODUCT DESCRIPTION: ZIG ZAG SHORT (15 DEG) 1' X 24.4' X 36"

PART NUMBER: XXX-XXXX

NOTE: OR APPROVED EQUAL

6



PRODUCT MADE BY AMERICAN RAMP COMPANY
CONTACT: ALEC BELDEN
EMAIL: ALEC@AMERICANRAMPCOMPANY.COM
WEB: AMERICANRAMPCOMPANY.COM
PRODUCT DESCRIPTION: ROLLER CORNER (90 DEG) 1' X 20.6' X 36"

PART NUMBER: XXX-XXXX

NOTE: OR APPROVED EQUAL

7



PRODUCT MADE BY AMERICAN RAMP COMPANY
CONTACT: ALEC BELDEN
EMAIL: ALEC@AMERICANRAMPCOMPANY.COM
WEB: AMERICANRAMPCOMPANY.COM
PRODUCT DESCRIPTION: ROLLER CORNER (45 DEG) 1' X 23.9' X 36"

PART NUMBER: XXX-XXXX

NOTE: OR APPROVED EQUAL

8



PRODUCT MADE BY AMERICAN RAMP COMPANY
CONTACT: ALEC BELDEN
EMAIL: ALEC@AMERICANRAMPCOMPANY.COM
WEB: AMERICANRAMPCOMPANY.COM
PRODUCT DESCRIPTION: WIDE ROLLER 1' X 18.7' X 60"

PART NUMBER: XXX-XXXX

NOTE: OR APPROVED EQUAL

9



PRODUCT MADE BY AMERICAN RAMP COMPANY
CONTACT: ALEC BELDEN
EMAIL: ALEC@AMERICANRAMPCOMPANY.COM
WEB: AMERICANRAMPCOMPANY.COM
PRODUCT DESCRIPTION: WIDE DOUBLE ROLLER 1' X 34.7' X 60"

PART NUMBER: XXX-XXXX

NOTE: OR APPROVED EQUAL

10



PRODUCT MADE BY AMERICAN RAMP COMPANY
CONTACT: ALEC BELDEN
EMAIL: ALEC@AMERICANRAMPCOMPANY.COM
WEB: AMERICANRAMPCOMPANY.COM
PRODUCT DESCRIPTION: 1' TEETER TOTTER AND SIGNAGE, 36" WIDE

PART NUMBER: XXX-XXXX

NOTE: OR APPROVED EQUAL

*****SKILLS FEATURES ARE CONSIDERED TO HAVE NEGLIGABLE VOLUME WHEN CONSIDERING "NO-RISE"*****



P.O. Box 20280
Boulder, CO 80308
303.545.9011
www.IMBA.com

DINGLEWOOD PARK
COLUMBUS, GA
DETAILS

PROJECT:

SHEET TITLE:

PROJECT No: MTCO2301
ORIGIN DATE: 11.27.2023
DRAWN BY: TJH/RMH
CHECKED BY: MR

ISSUED FOR:		
No.	DATE	COMMENT
A	12/12/23	90% DD

SHEET NUMBER:
DT-01

BEGINNER SKILLS FEATURES



DESCRIPTION: DIRT BERM

1

2



PRODUCT MADE BY AMERICAN RAMP COMPANY
 CONTACT: ALEC BELDEN
 EMAIL: ALEC@AMERICANRAMPCOMPANY.COM
 WEB: AMERICANRAMPCOMPANY.COM
 PRODUCT DESCRIPTION: ZIG ZAG SHORT (30 DEG) 2' X 24.0' X 36"

PART NUMBER: XXX-XXXX
 NOTE: OR APPROVED EQUAL

3



PRODUCT MADE BY AMERICAN RAMP COMPANY
 CONTACT: ALEC BELDEN
 EMAIL: ALEC@AMERICANRAMPCOMPANY.COM
 WEB: AMERICANRAMPCOMPANY.COM
 PRODUCT DESCRIPTION: ROLLER CORNER (45 DEG) 2' X 23.9' X 36"

PART NUMBER: XXX-XXXX
 NOTE: OR APPROVED EQUAL

4



PRODUCT MADE BY AMERICAN RAMP COMPANY
 CONTACT: ALEC BELDEN
 EMAIL: ALEC@AMERICANRAMPCOMPANY.COM
 WEB: AMERICANRAMPCOMPANY.COM
 PRODUCT DESCRIPTION: SINGLE ROLLER 2' X 18.7' X 36"

PART NUMBER: XXX-XXXX
 NOTE: OR APPROVED EQUAL

5



PRODUCT MADE BY AMERICAN RAMP COMPANY
 CONTACT: ALEC BELDEN
 EMAIL: ALEC@AMERICANRAMPCOMPANY.COM
 WEB: AMERICANRAMPCOMPANY.COM
 PRODUCT DESCRIPTION: TRIPLE ROLLER 2' X 34.7' X 36"

PART NUMBER: XXX-XXXX
 NOTE: OR APPROVED EQUAL

*****SKILLS FEATURES ARE CONSIDERED TO HAVE NEGLIGABLE VOLUME WHEN CONSIDERING "NO-RISE" (BERMS ARE AN EXCEPTION)**



P.O. Box 20280
 Boulder, CO 80308
 303.545.9011
 www.IMBA.com

DINGLEWOOD PARK
 COLUMBUS, GA
 DETAILS

PROJECT:

SHEET TITLE:

PROJECT No. MTCO2301
 ORIGIN DATE: 11.27.2023
 DRAWN BY: TJH/RMH
 CHECKED BY: MR

ISSUED FOR:

No.	DATE	COMMENT
A	12/12/23	90% DD

SHEET NUMBER:

DT-02

INTERMEDIATE SKILLS FEATURES



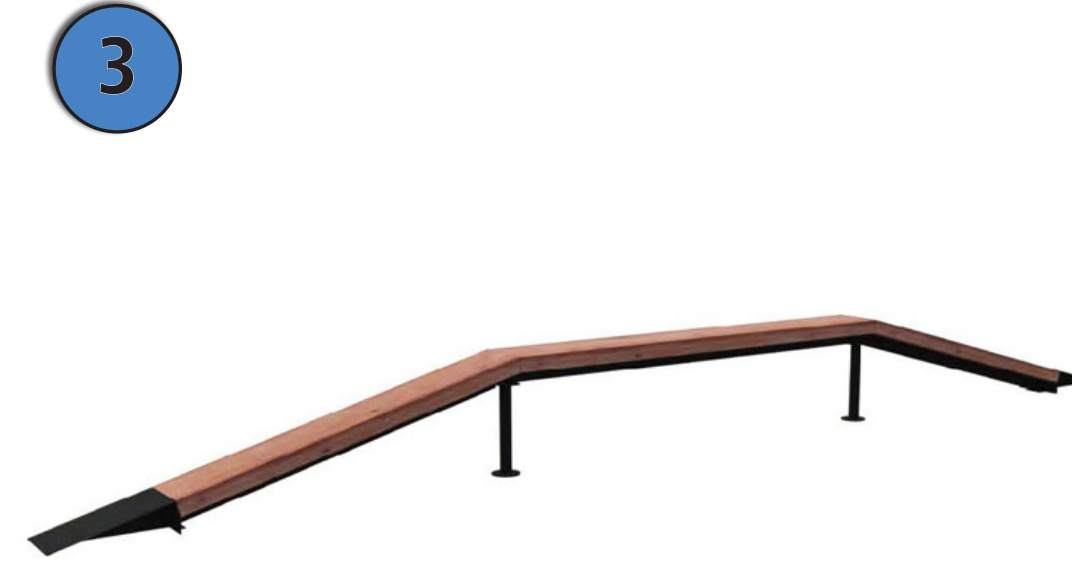
DESCRIPTION: DIRT BERM



PRODUCT MADE BY AMERICAN RAMP COMPANY
 CONTACT: ALEC BELDEN
 EMAIL: ALEC@AMERICANRAMPCOMPANY.COM
 WEB: AMERICANRAMPCOMPANY.COM
 PRODUCT DESCRIPTION: ZIG ZAG CORNER (90 DEG) 2' X 21.8' X 36"

PART NUMBER: XXX-XXXX

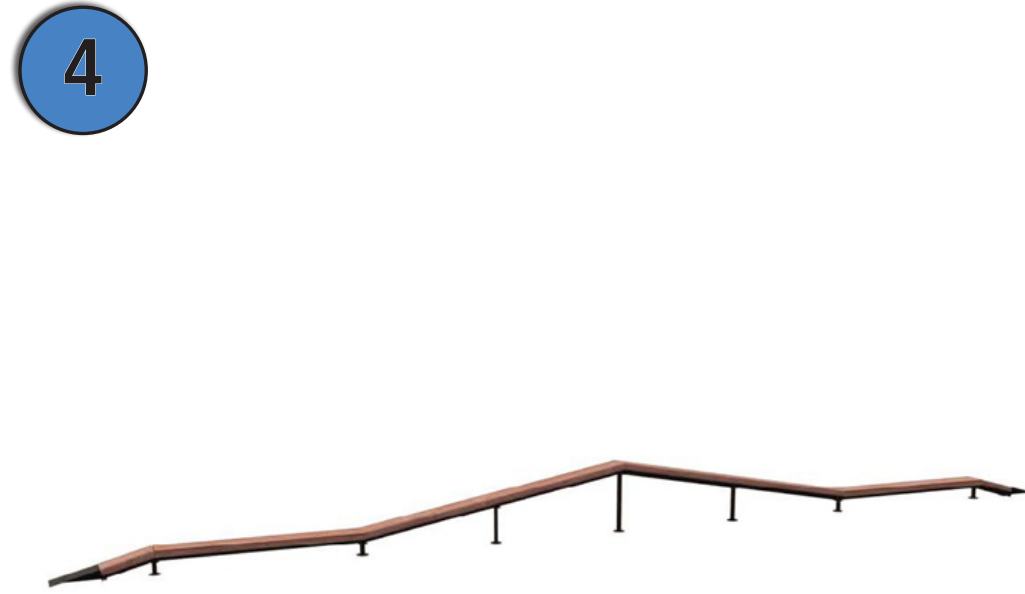
NOTE: OR APPROVED EQUAL



PRODUCT MADE BY AMERICAN RAMP COMPANY
 CONTACT: ALEC BELDEN
 EMAIL: ALEC@AMERICANRAMPCOMPANY.COM
 WEB: AMERICANRAMPCOMPANY.COM
 PRODUCT DESCRIPTION: STRAIGHT LADDER (11 DEG) 2' X 27.7' X 12"

PART NUMBER: XXX-XXXX

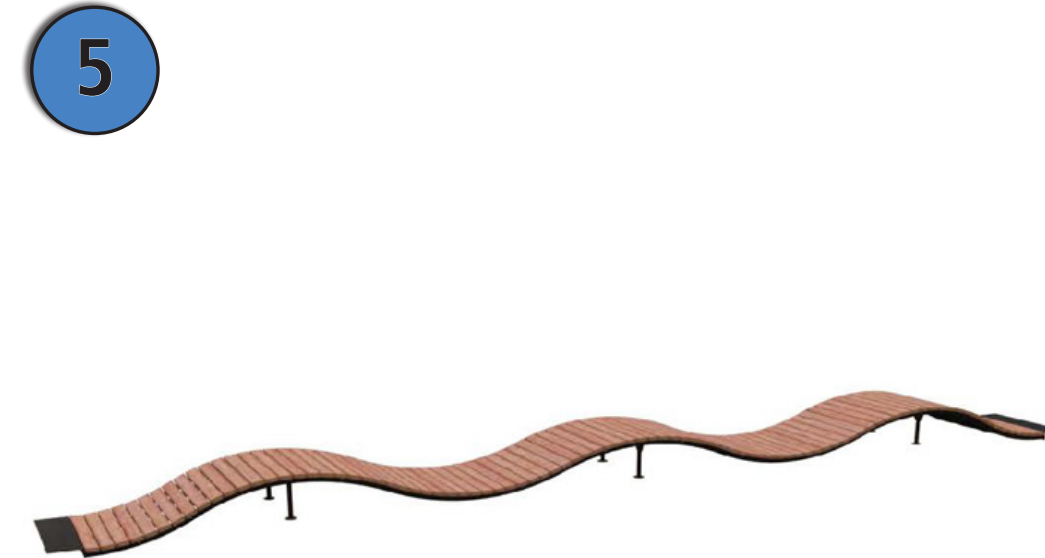
NOTE: OR APPROVED EQUAL



PRODUCT MADE BY AMERICAN RAMP COMPANY
 CONTACT: ALEC BELDEN
 EMAIL: ALEC@AMERICANRAMPCOMPANY.COM
 WEB: AMERICANRAMPCOMPANY.COM
 PRODUCT DESCRIPTION: MOUNTAIN TOP 3' PEAK 3' X 46.2' X 36"

PART NUMBER: XXX-XXXX

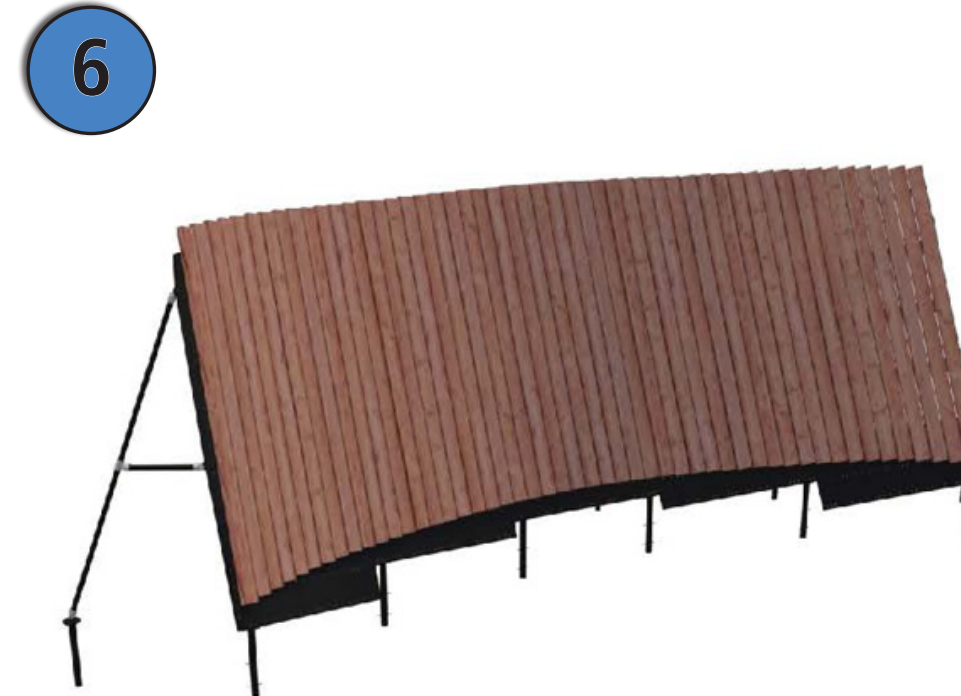
NOTE: OR APPROVED EQUAL



PRODUCT MADE BY AMERICAN RAMP COMPANY
 CONTACT: ALEC BELDEN
 EMAIL: ALEC@AMERICANRAMPCOMPANY.COM
 WEB: AMERICANRAMPCOMPANY.COM
 PRODUCT DESCRIPTION: TRIPLE WIDE ROLLER 3' X 50.8' X 72"

PART NUMBER: XXX-XXXX

NOTE: OR APPROVED EQUAL



PRODUCT MADE BY AMERICAN RAMP COMPANY
 CONTACT: ALEC BELDEN
 EMAIL: ALEC@AMERICANRAMPCOMPANY.COM
 WEB: AMERICANRAMPCOMPANY.COM
 PRODUCT DESCRIPTION: BEGINNER CURVED WALL (55 DEG) 20' RADIUS 6' X 25"

PART NUMBER: XXX-XXXX

NOTE: OR APPROVED EQUAL

*****SKILLS FEATURES ARE CONSIDERED TO HAVE NEGLIGABLE VOLUME WHEN CONSIDERING "NO-RISE", (BERMS ARE AN EXCEPTION)**



IMBA

P.O. Box 20280
 Boulder, CO 80308
 303.545.9011
 www.IMBA.com

DINGLEWOOD PARK
COLUMBUS, GA
 DETAILS

PROJECT:

SHEET TITLE:

PROJECT No: MTCO2301
 ORIGIN DATE: 11.27.2023
 DRAWN BY: TJH/RMH
 CHECKED BY: MR

ISSUED FOR:

No.	DATE	COMMENT
A	12/12/23	90% DD

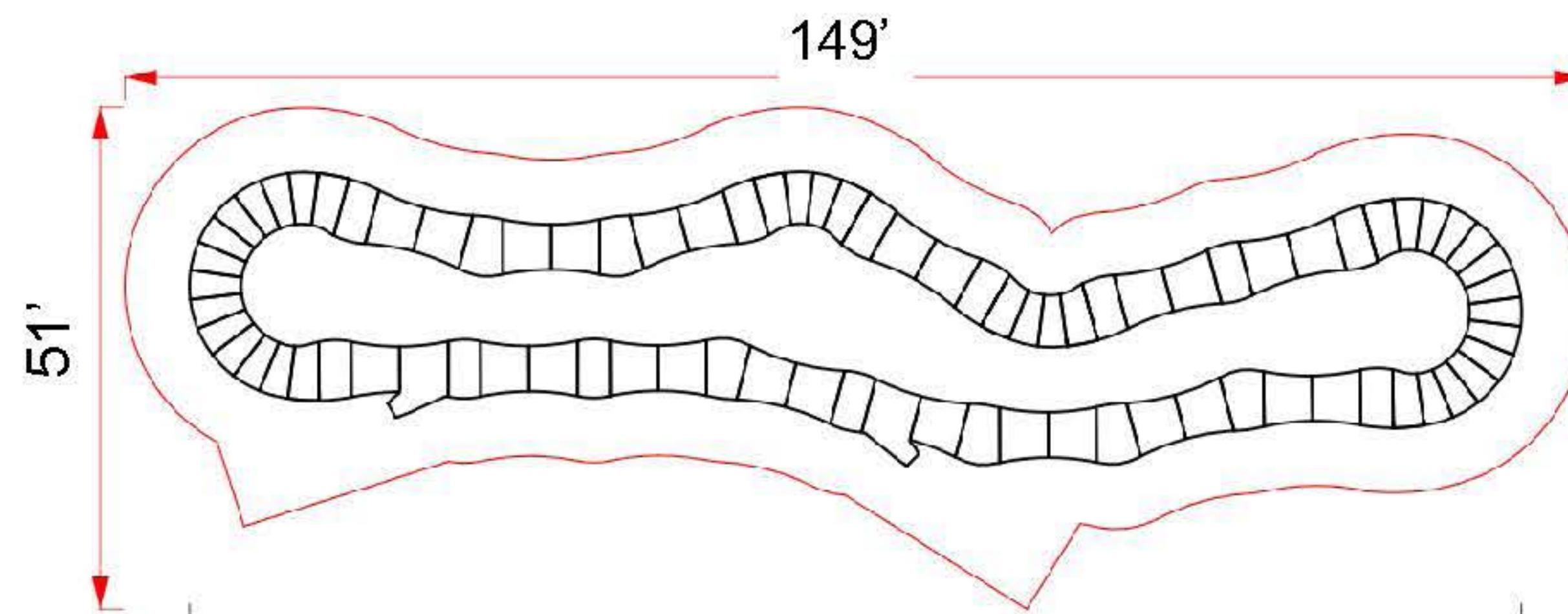
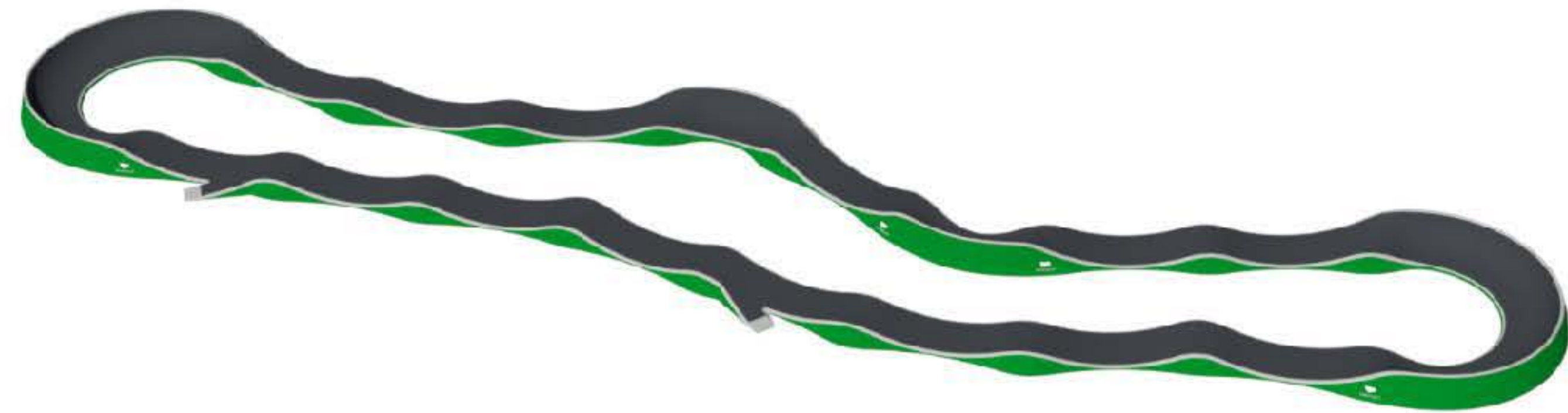
SHEET NUMBER:

DT-03

PUMP TRACK / ALL WHEELS FEATURES

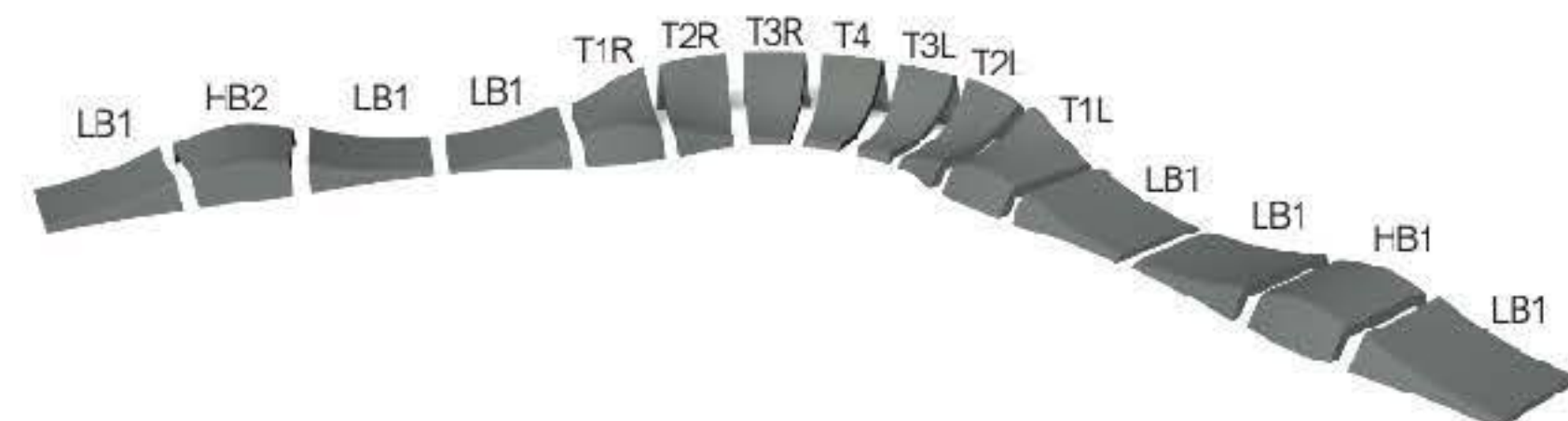


MODULAR PUMPTRACK
Bern



Rideable Surface Length: 297'

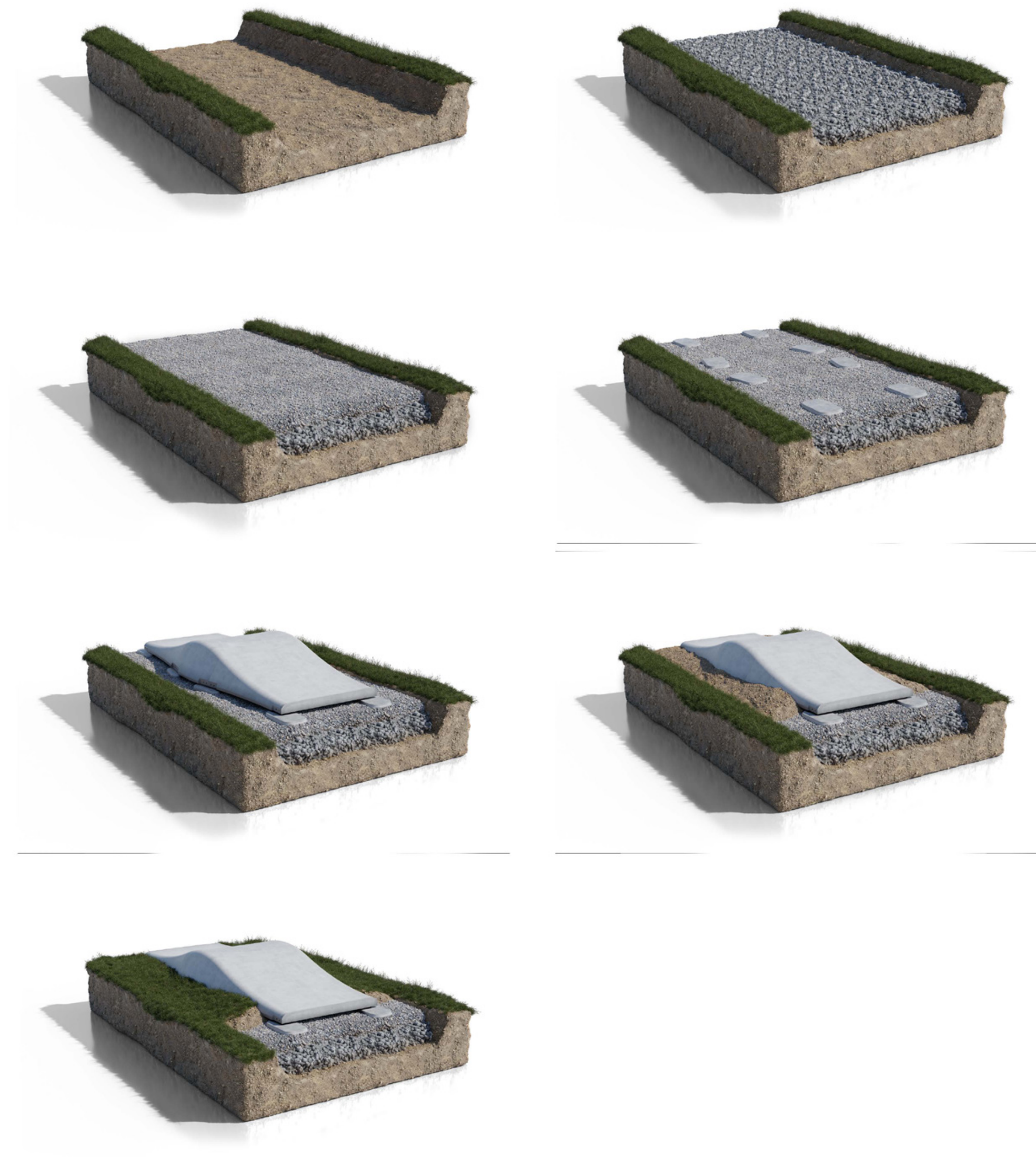
Code	Quantity	Color	Description
T1L+R	4+4	Ral 7024	Riding Surface
T2L+R	4+4	Ral 7024	Riding Surface
T3L+R	4+4	Ral 7024	Riding Surface
T4	20	Ral 7035	Edge Highlight
LR1	25	Ral 6037	Structure
HB1	4	Ral 6037	Structure
HB2	6	Ral 6037	Structure
X1L+R	1+1	Ral 6037	Structure
X5	2	Ral 6037	Structure



Parkitect AG
Reutenenstrasse 22
9042 Speicher, Switzerland
info@parkitect.ch
MWS1 - CHE-106.823.064

***PUMP TRACK WILL BE PRE-CAST CONCRETE

CONCRETE PUMP TRACK SITE PREPARATION SEQUENCE



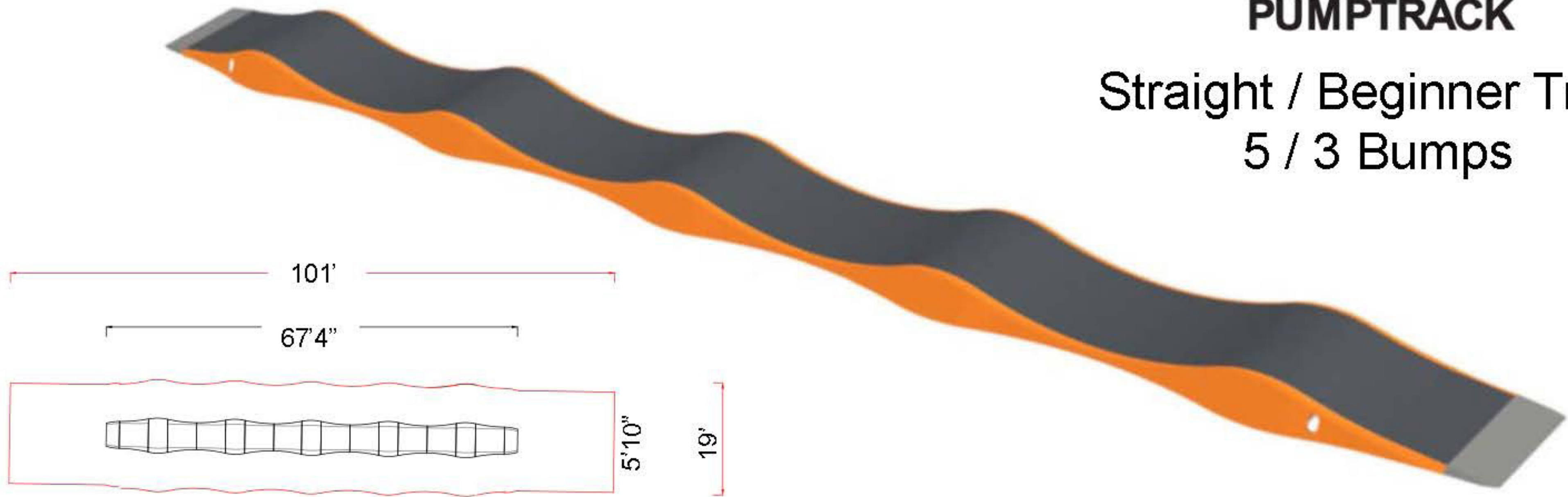
***PUMP TRACK VOLUMES WILL BE PROVIDED BY VENDOR AND WILL BE BALANCED WITH BIO-SWALE/RAIN GARDEN

PUMP TRACK / ALL WHEELS FEATURES (CONCRETE)

1

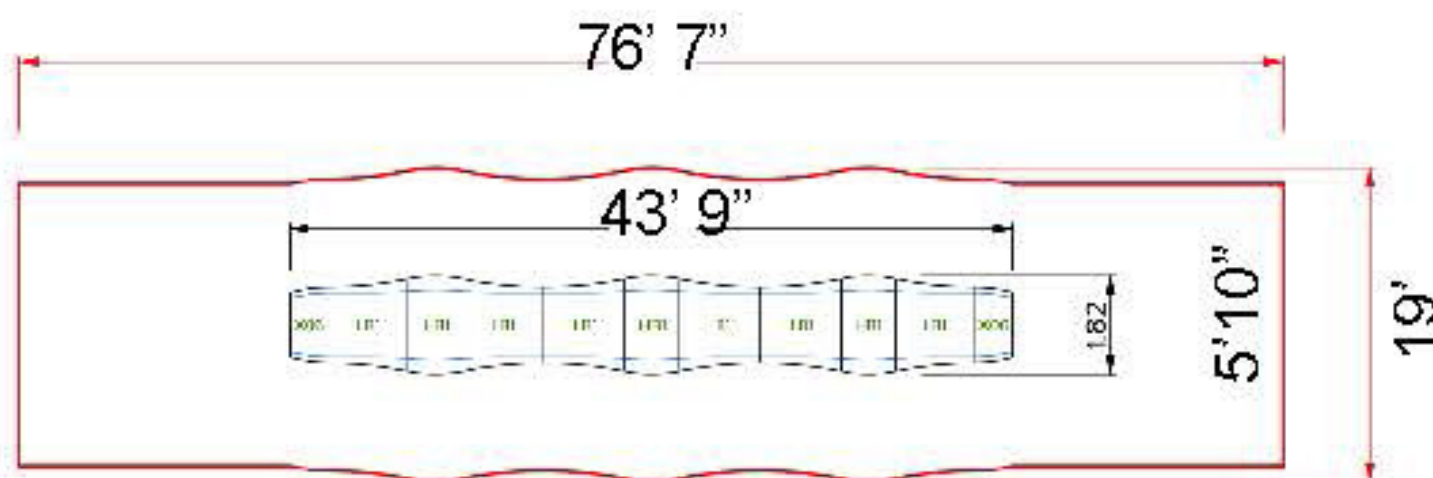
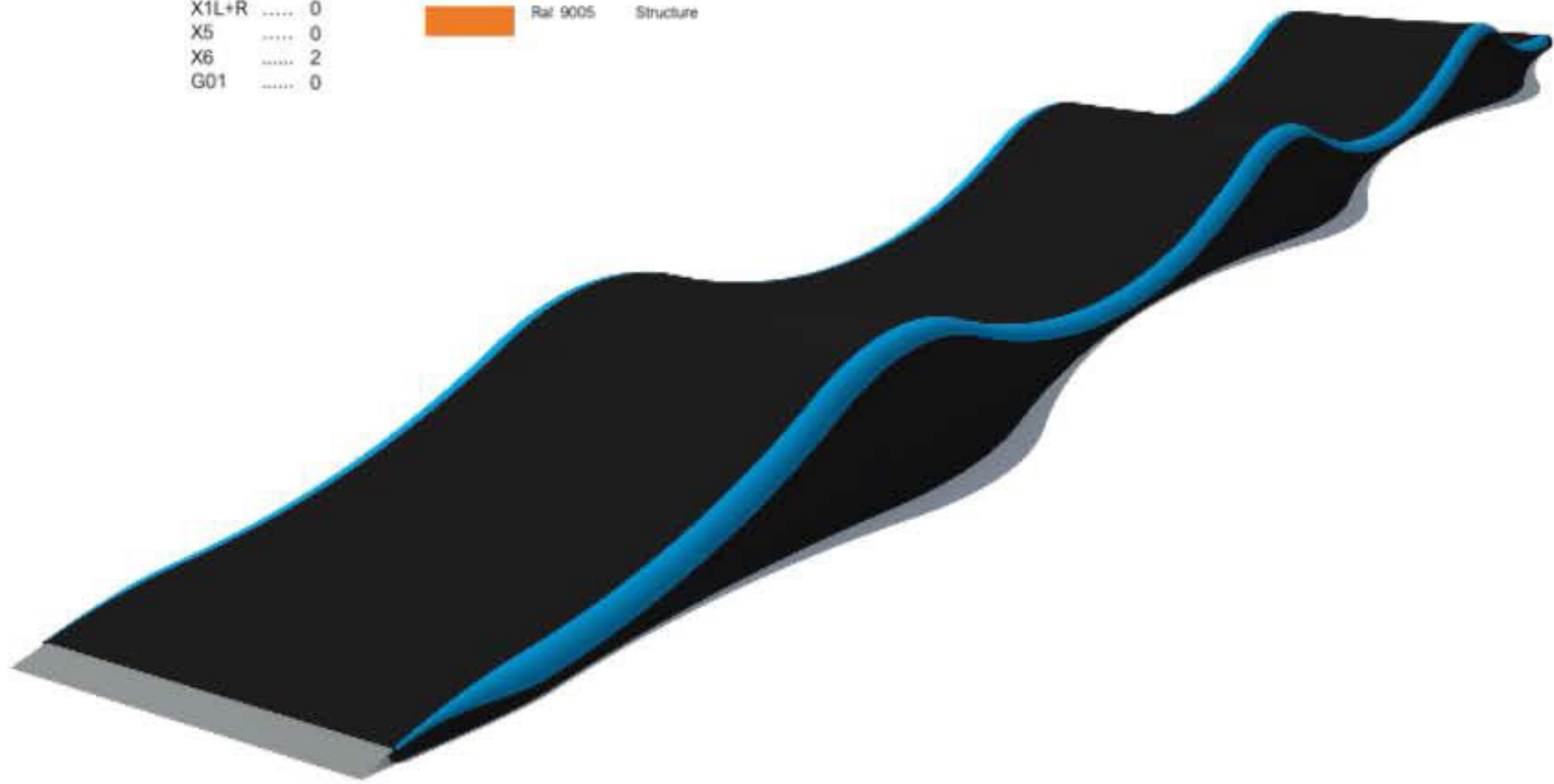


MODULAR PUMPTRACK Straight / Beginner Track 5 / 3 Bumps



T1L+R	0
T2L+R	0
T3L+R	0
T4	0
LB1	8
HB1	5
HB2	0
X1L+R	0
X5	0
X6	2
G01	0

Colors		
	Ral 7024	Riding Surface
	Ral 7024	Edge Highlight
	Ral 9005	Structure



Part count	
T1L+R	0+0
T2L+R	0+0
T3L+R	0+0
T4	0
LB1	6
HB1	3
HB2	0
X1L+R	0+0
X06	2

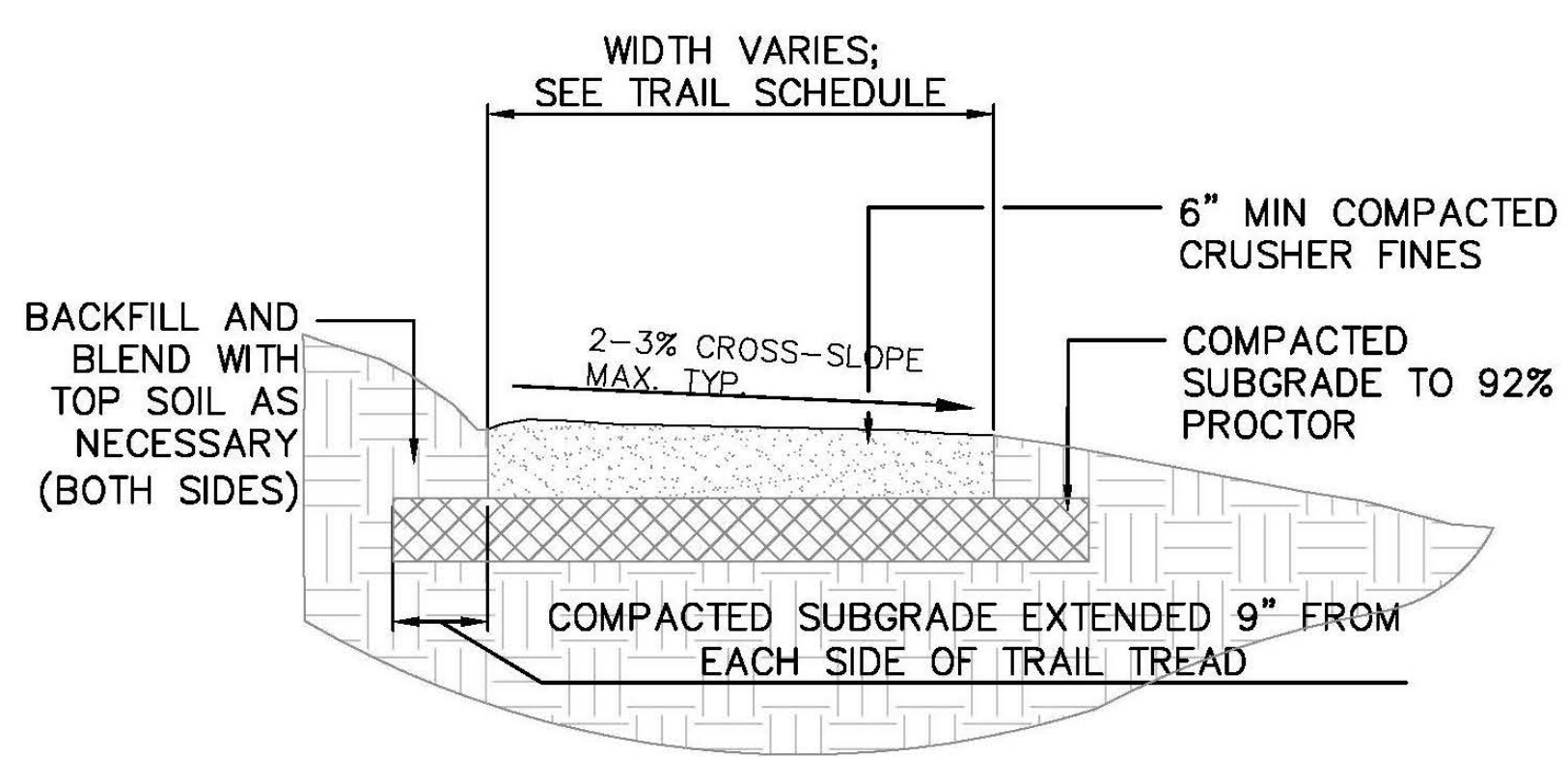
Colors	
	Ral 9005
	RGB 14, 15, 16 CMY 100, 40, 50, 90
	Ral 5015 RGB 81, 124, 176 CMY 90, 40, 0, 0
	Ral 9005 RGB 14, 15, 16 CMY 100, 40, 50, 90

***PUMP TRACK WILL BE PRE-CAST CONCRETE AND WILL BE 4 BUMPS (NOT 5/3 AS PICTURED)

PARKITECT®
PARKITECT s.r.o.
Valešská Polanka 393
756 11 Valešská Polanka
Czech Republic
info@parkitect.ch

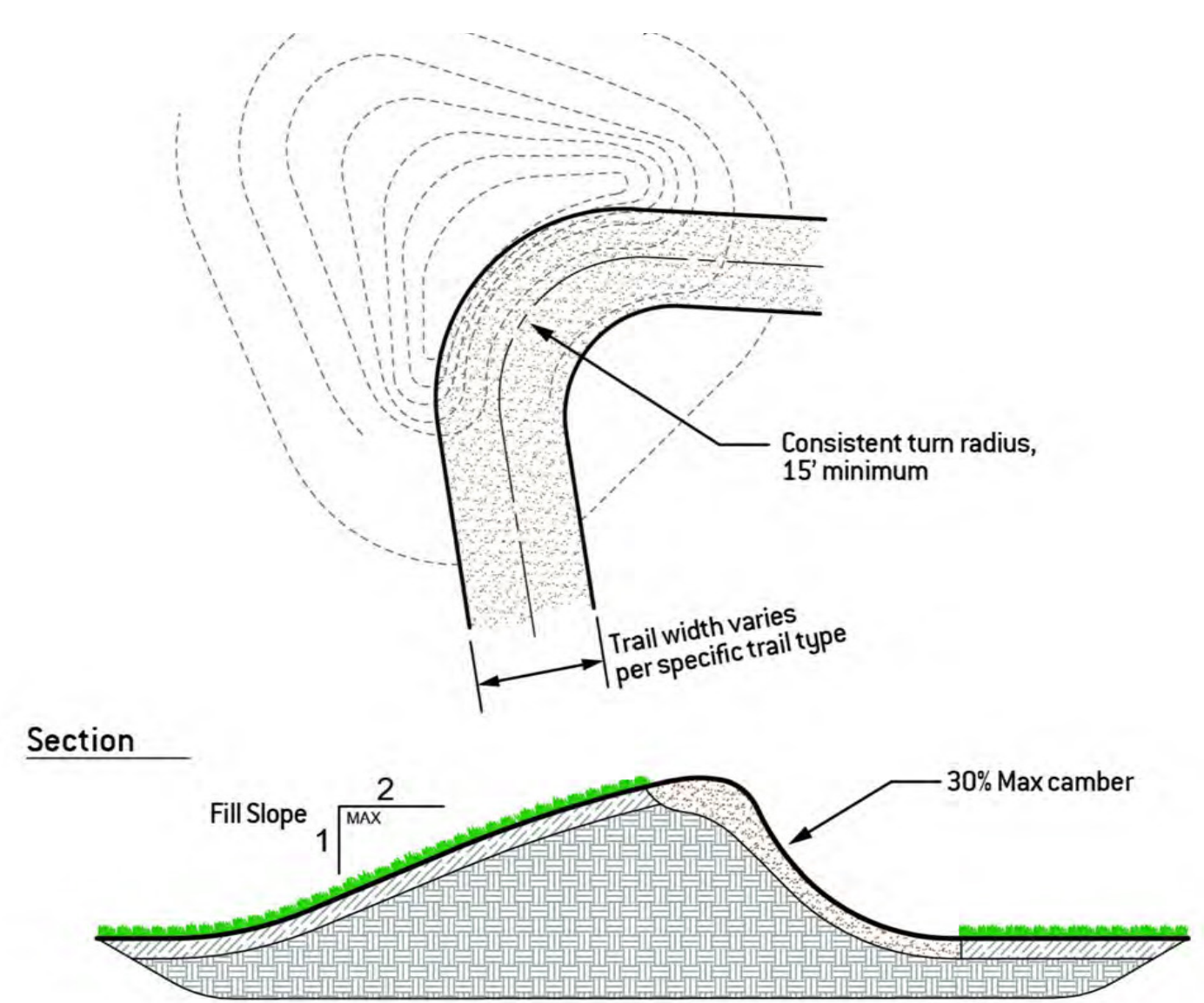
***PUMP TRACK VOLUMES WILL BE PROVIDED BY VENDOR AND WILL BE BALANCED WITH BIO-SWALE/RAIN GARDEN

SITE FEATURES AND DETAILS

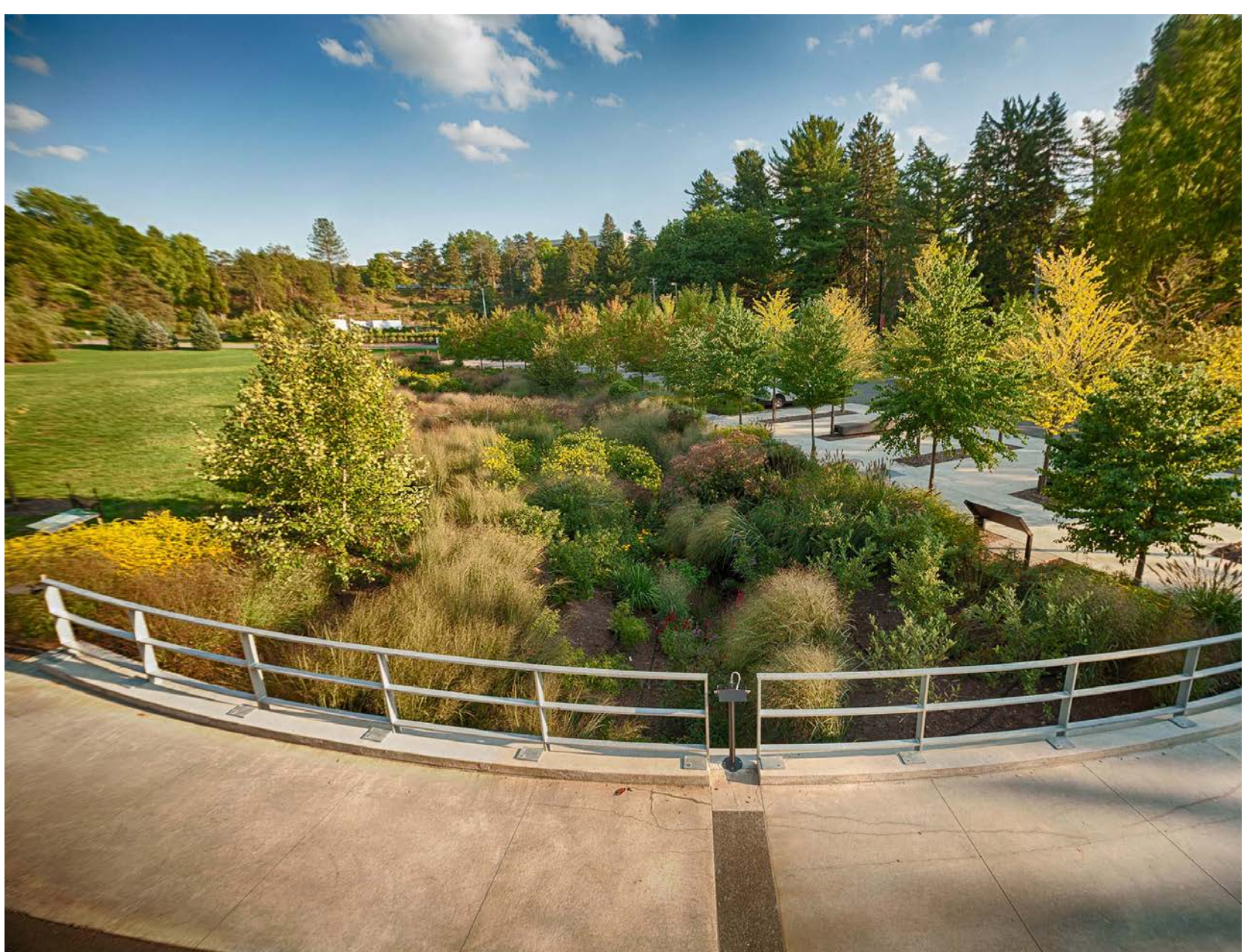


CRUSHER FINES TRAIL SECTION (TYP)
SCALE: N.T.S

**TYPICAL TRAIL TREAD WILL RESULT IN NET ZERO VOLUME DISPLACEMENT



TYPICAL BERMED TURN
SCALE: NTS



RAIN GARDEN/BIOSWALE IMAGE



RAIN GARDEN/BIOSWALE IMAGE



CEDAR SPLIT RAIL FENCING - 8' O.C. POST SPACING
VENDOR - TBD

TRAIL TYPES

SKILLS FEATURES (TRD)

DESCRIPTION

- Skills features are specifically designed for all levels of bikers to develop bike skills. These can be laid out as a loop trail that link a series of features to allow riders to progress their skills.
- Skills features include: skinny's, ladder bridges, rolling ramps, kinked boardwalks.
- Trails feature ride around options for riders who choose not to ride the skills features, fall zones clear of obstacles, and advanced alternatives should have good visibility for oncoming riders.

CRITERIA

- Skills features can be made out of natural rot resistant wood and/or stone. Pre-fabricated steel structures with wood decking are also common.
- Widths vary from 10" to 48" wide
- Heights here will range from 6" off the ground to 2' off the ground.



TRAIL TYPES

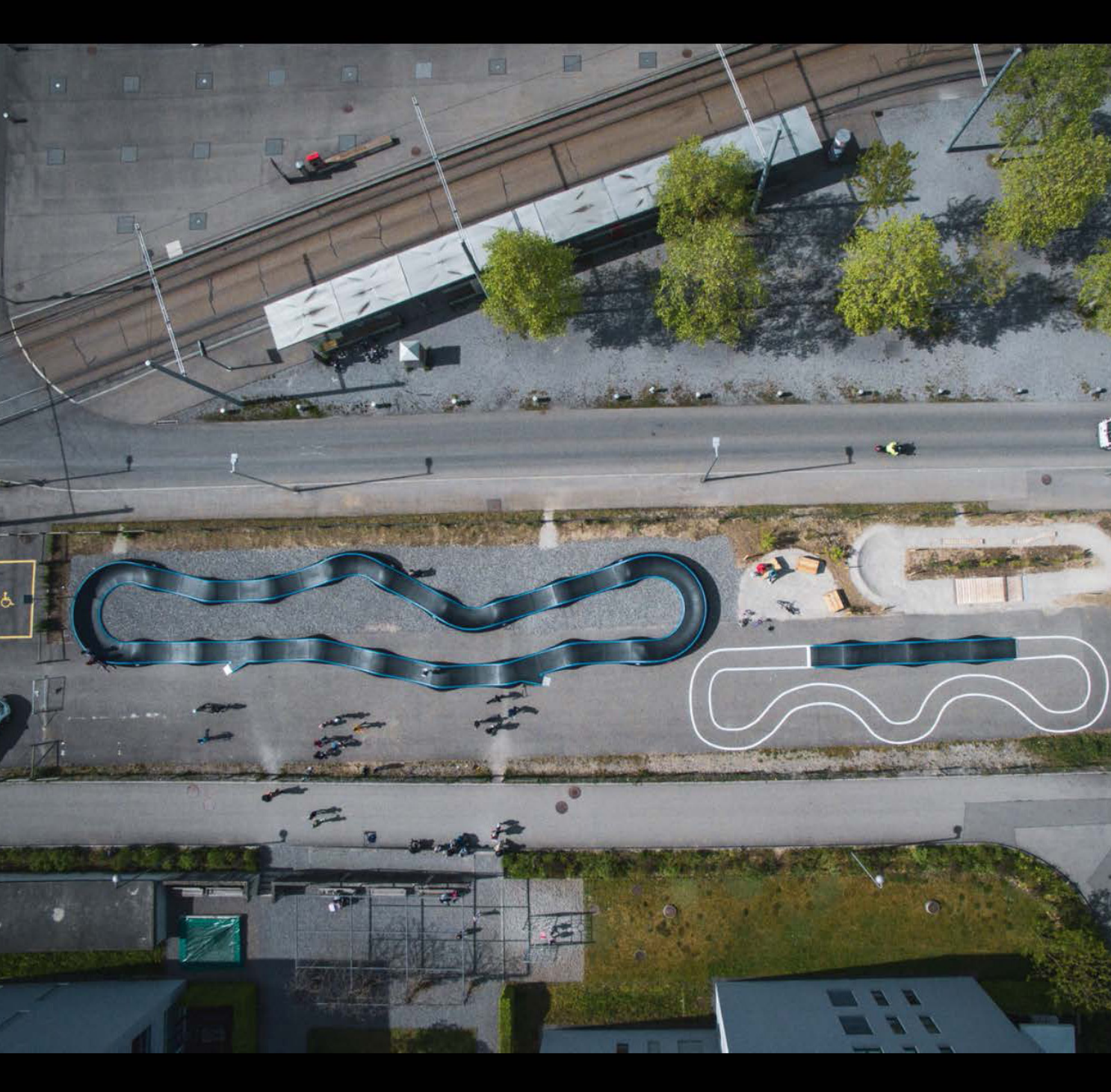
MODULAR PUMP TRACK

DESCRIPTION

- A looped sequence of rollers and berms (swooping, banked turns) in a linear or looper configuration.
- Pump track loops are the typical layout.
- Designed to maximize momentum by “pumping” and can be ridden with minimal or no pedaling.
- Suitable for all ability levels and adaptive equipment
- Rollers and berms range from 2’ to 4’ tall with appropriate transition radius and options for doubles or line transfers.
- Linear pumptrack will serve as a progression step from skills tracks to intermediate pump track.

CRITERIA

- Size: 5,000 to 10,000 square feet
- Located on mostly flat land
- All weather surfaces such as asphalt, concrete, and precast modular are strongly recommended.
- Dirt surface is no longer recommended due to extensive maintenance effort and seasonal closures due to wet and freeze/thaw impacts to surface.
- Hard surface encourages use by bikes, scooter, rollerblades, skateboards, etc.



SCHEMATIC DESIGN

TRAIL TYPES

BICYCLE PLAYGROUND

DESCRIPTION

- Kid-oriented loop trails that can be connected to a gateway green single track and features loop trail.
- The trail links wide, low skills development features, tunnels, hoops, art placement ride arounds, and animated features to make a kid friendly experience more like a playground than a traditional skills loop.

CRITERIA

- Size: 2' to 3' wide and 500' to 1,200' long

